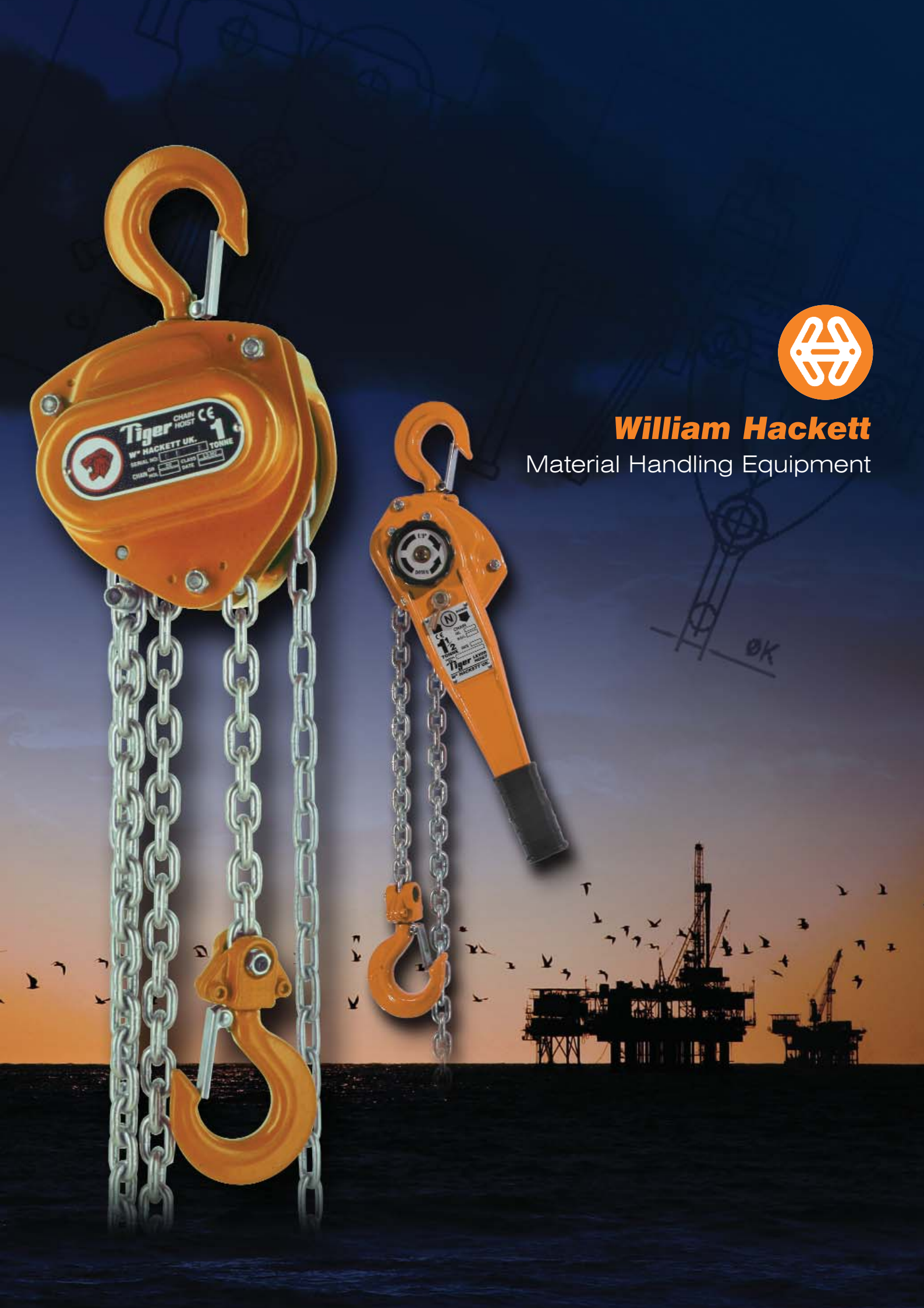


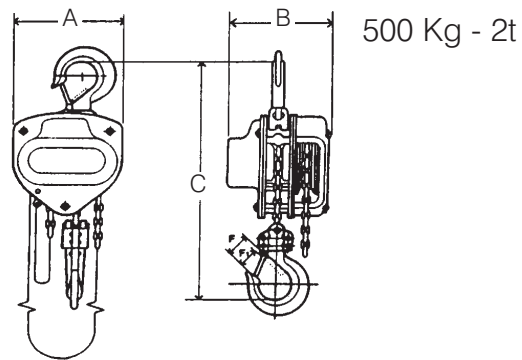


**William Hackett**

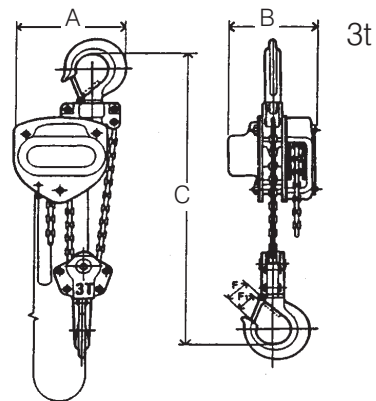
Material Handling Equipment



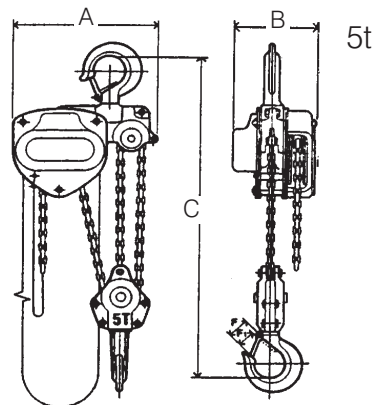
## Tiger Manual Chain Hoist - BSEN 13157:2004



500 Kg - 2t



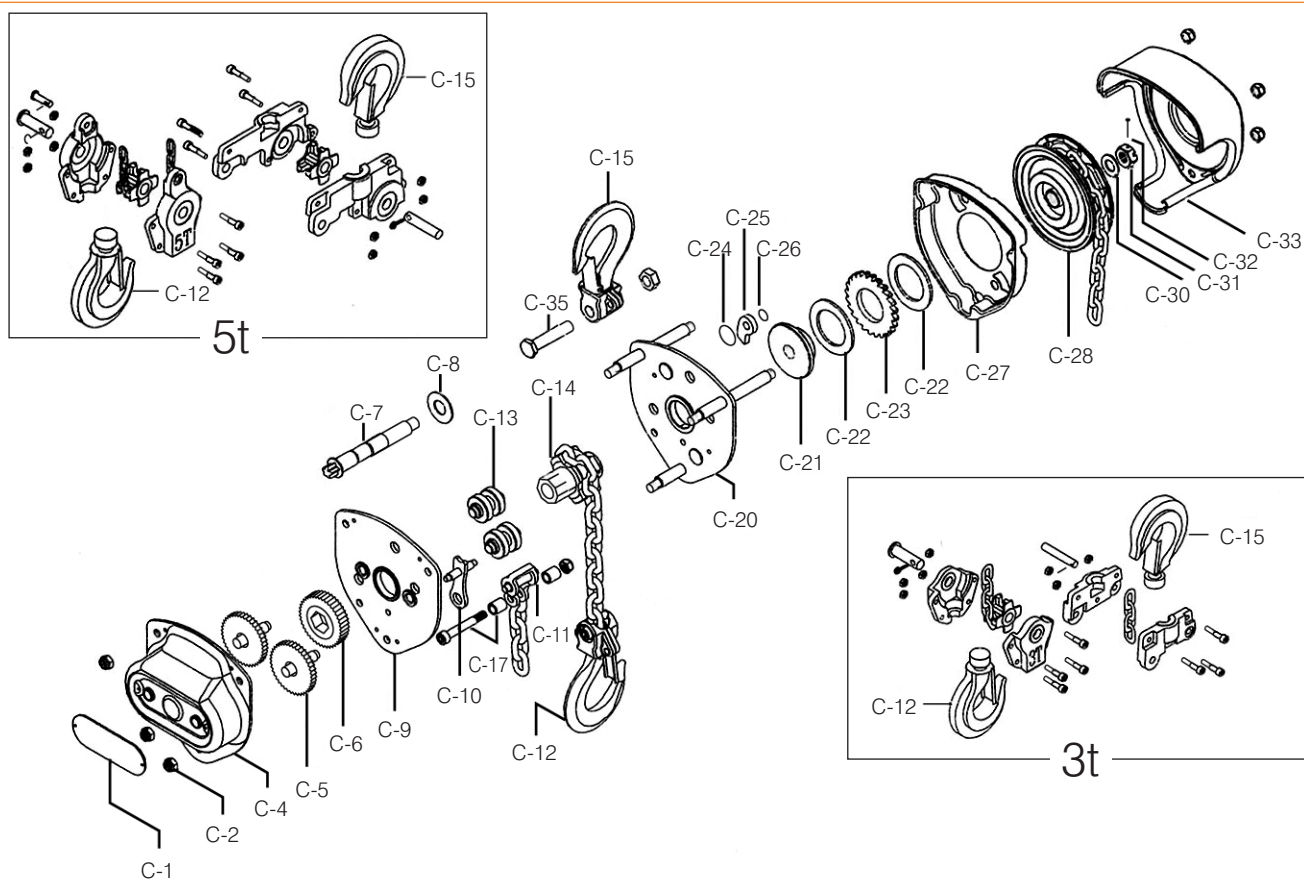
3t



5t

Part Code	S.W.L.	Dimensions mm					Load Chain		Mass Kg 3 mtr
		A	B	C	F	F1	Size mm	No. of falls	
012.050	500Kg	130	156	305	30	26	6.3	1	10.8
012.100	1.0t	150	156	340	33	28	6.3	1	12
012.150	1.5t	180	166	385	38	34	7.1	1	16.3
012.200.L	2.0t	180	166	397	43	38	7.1	1	16.7
012.200	2.0t	200	175	420	43	38	8.0	1	21
012.300	3.0t	210	166	465	43	38	7.1	2	25
012.500	5.0t	330	175	575	57	52	8.0	3	39

## Tiger Chain Hoist Spare Parts

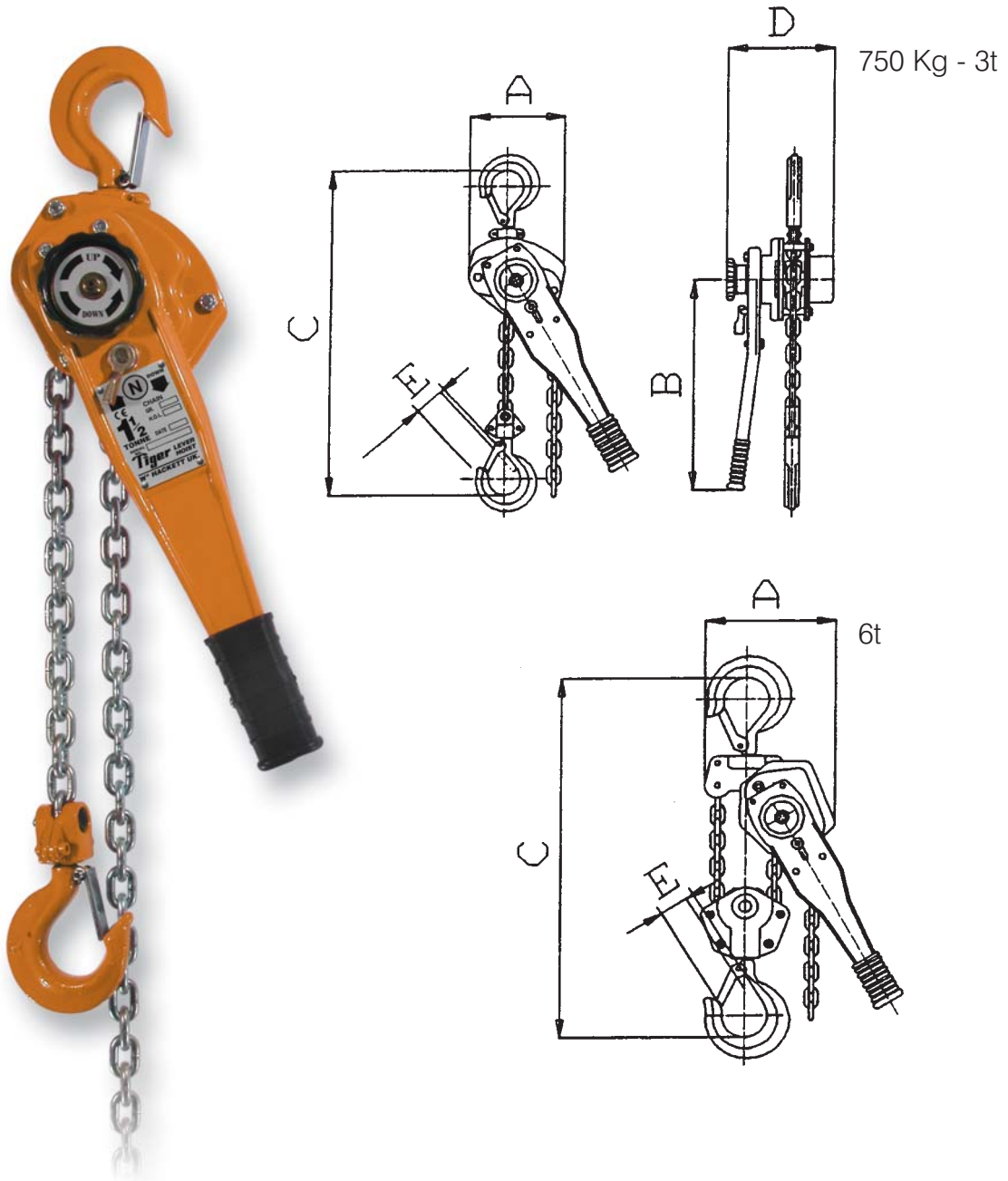


Part Code	Part Name
C - 0	Safety Catch
C - 1	Label
C - 2	Nut
C - 4	Gear Cover
C - 5	Pinion Gear
C - 6	Load Gear
C - 7	Pinion Shaft
C - 8	Pinion Shaft Washer
C - 9	Gear-Side Plate
C - 10	Stripper
C - 11	Load Chain Anchoring
C - 12	Bottom Hook Assembly
C - 13	Load Chain Guide
C - 14	Load Sheave
C - 15	Top Hook Assembly
C - 17	Chain-End-Fixing Pin

Part Code	Part Name
C - 20	Wheel-Side Plate Assembly
C - 21	Disc Hub
C - 22	Friction Disc
C - 23	Ratchet Gear
C - 24	Pawl Spring
C - 25	Pawl
C - 26	Snap Ring for Pawl Pin
C - 27	Ratchet Gear Cover
C - 28	Handwheel
C - 30	Washer for Pinion Shaft Nut
C - 31	Check Nut
C - 32	Split Pin
C - 33	Handwheel Cover
C - 34	Nut / Bolt for Bottom Hook
C - 35	Nut / Bolt for Top Hook

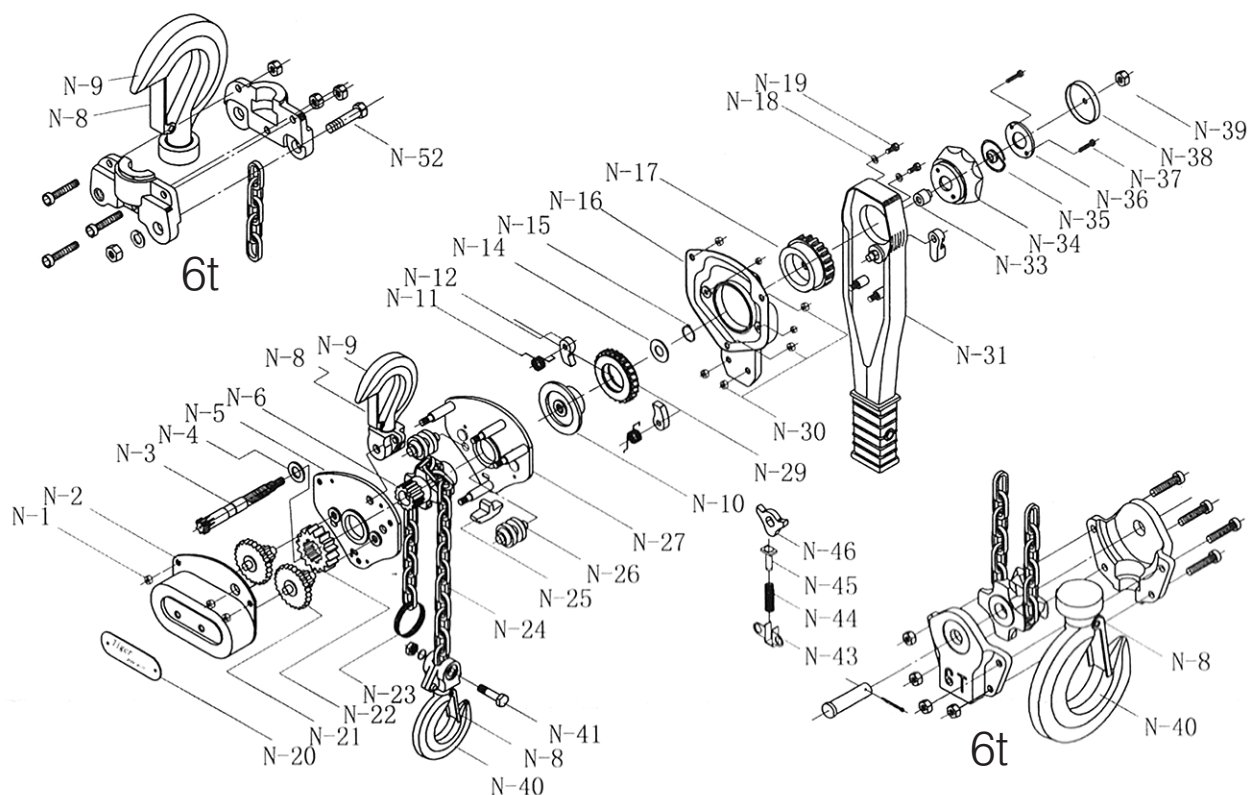


## Tiger Lever Hoist - BSEN 13157:2004



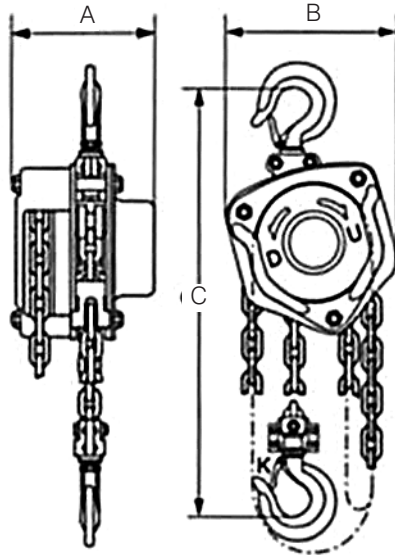
Part Code	S.W.L.	Dimensions mm					Load Chain		Mass Kg 1.5 Mtr
		A	B	C	D	E	Size mm	No. of Falls	
013.075	750Kg	128	240	275	158	26	6.3	1	7.2
013.150	1.5t	154	360	320	172	34	7.1	1	10.2
013.300	3.0t	182	360	400	195	38	10	1	18
013.600	6.0t	242	360	570	195	52	10	2	28

## Tiger Lever Hoist Spares

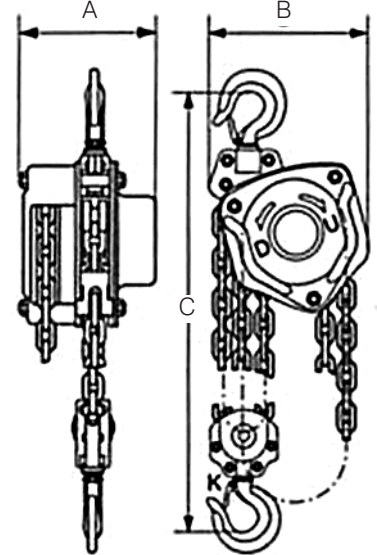


Part Code	Part Name	Part Code	Part Name
N - 1	Nut for Gear Cover	N - 25	Chain Stripper
N - 2	Gear Cover	N - 26	Load Chain Guide
N - 3	Pinion Shaft	N - 27	Wheel-side Plate Assembly
N - 4	Pinion Shaft Washer	N - 29+N13+N28	Ratchet Gear & Friction Disks
N - 5	Gear-side Plate	N - 30	Nut for Handle Cover
N - 6	Load Sheave	N - 31	Handle Assembly
N - 8	Safety Latch	N - 32	Change Lever
N - 9	Top Hook Assembly	N - 33	Retaining Spring Base
N - 10	Disc Hub	N - 34	Grip Ring
N - 11	Pawl Spring	N - 35	Retaining Spring
N - 12	Brake Pawl	N - 36	Fixing Plate
N - 14	Spring Disc	N - 37	Screw for Fixing Plate
N - 15	Snap Ring	N - 38	Grip Ring Cover
N - 16	Brake Cover with Handle Cover	N - 39	Pinion Nut
N - 17	Change Gear	N - 40	Bottom Hook Assembly
N - 18	Spring Washer	N - 41	Bottom Hook Pin 0.75t - 3.0t
N - 19	Screw for Handle	N - 43	Spring Stand
N - 20	Label	N - 44	Pushing Up Spring
N - 21	Pinion Gear	N - 45	Pushing Up Pin
N - 22	Load Gear	N - 46	Change Pawl
N - 23	End	N - 52	Bottom Hook Pin 6.0T

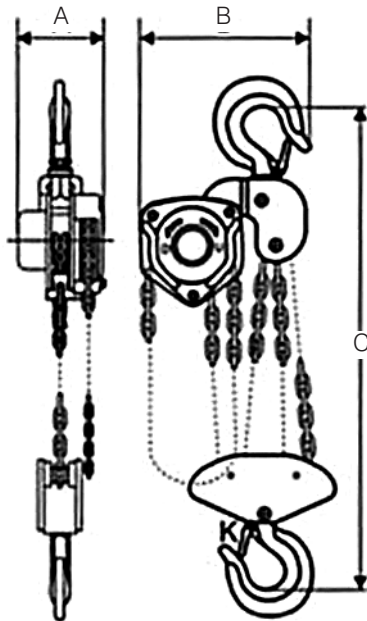
## Hackett Chain Block - BSEN 13157:2004



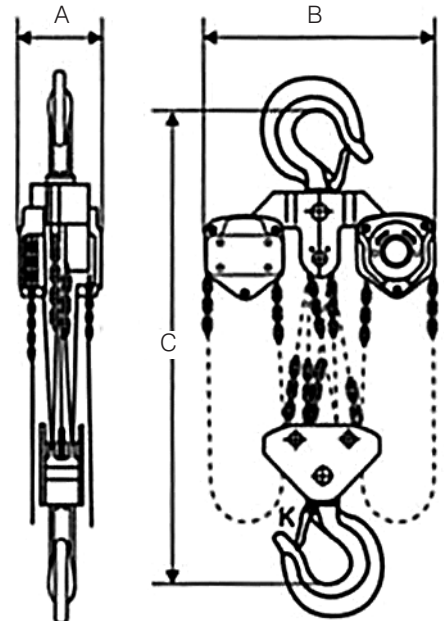
250 Kg - 500 Kg - 1.0t - 1.5t - 2.0t



3t - 5t



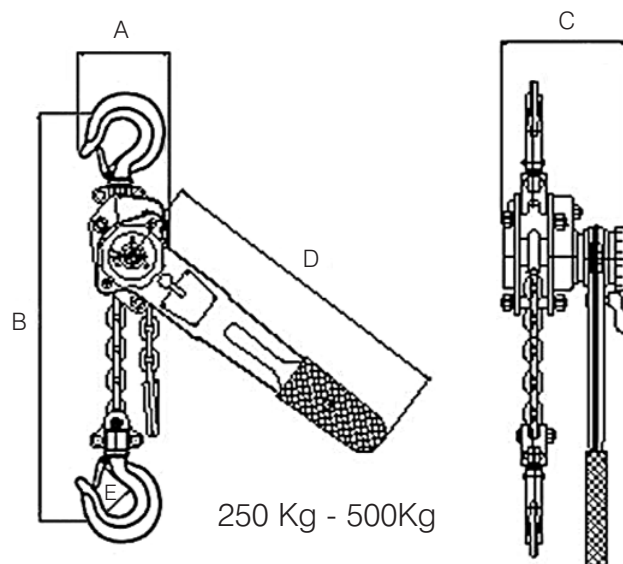
10t



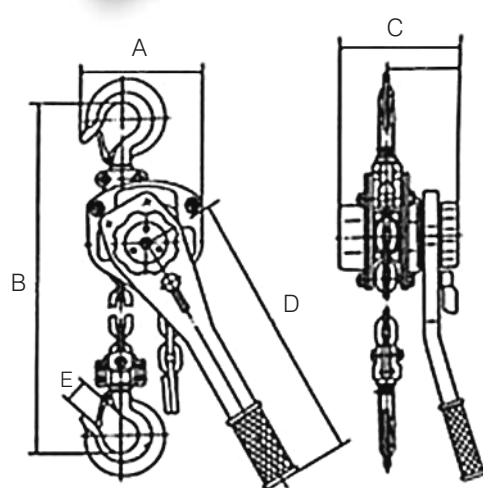
20t

Part Code	S.W.L.	Dimensions mm				Load Chain		Mass Kg 3 mtr
		A	B	C	K	Size mm	No. of Falls	
002.025	250Kg	98	102	220	23	4	1	5
002.050	500Kg	131	127	270	30	6	1	10
002.100	1.0t	140	158	317	34	6	1	12
002.150	1.5t	161	187	399	38	8	1	18.5
002.200	2.0t	161	187	414	41	8	1	20
002.300	3.0t	161	210	465	48	8	2	29
002.500	5.0t	186	253	636	52	10	2	45.5
002/1000	10.0t	207	398	798	64	10	4	83
002/2000	20.0t	215	650	890	85	10	8	193

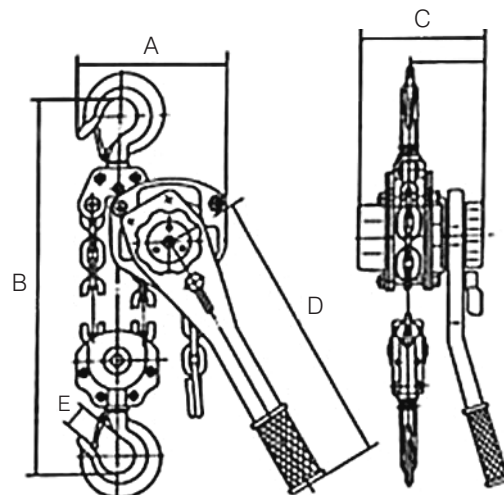
## Hackett Lever Hoist - BSEN13157:2004



250 Kg - 500Kg



750 Kg - 1.5t - 3t

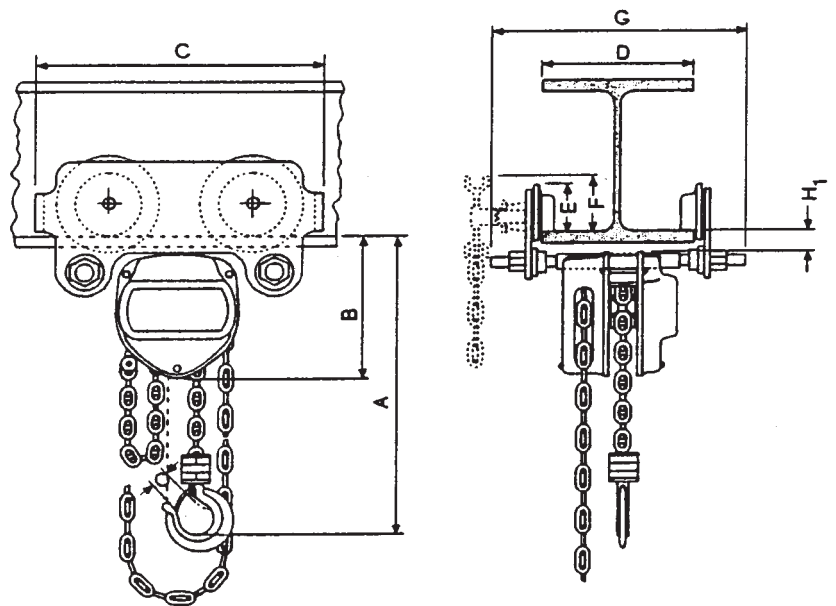


6t (2 fall) - 9t (3 fall)

Part Code	S.W.L.	Dimensions mm					Load Chain		Mass Kg 1.5 mtr
		A	B	C	D	E	Size mm	No. of Falls	
003.025	250Kg	60	250	92	160	20	4	1	1.8
003.050	500Kg	80	295	105	300	25	5	1	4
003.075	750Kg	135	320	155	285	29	6	1	7
003.150	1.5t	155	380	180	370	33	8	1	11
003.300	3.0t	200	480	190	410	37	10	1	21
003.600	6.0t	245	600	190	410	46	10	2	31
003.900	9.0t	330	700	215	410	49	10	3	46



## Combined Chain Block &amp; Trolley - BSEN 13157:2004



## Push Travel

Part Code	S.W.L.	Dimensions							
		A	B	C	D	E	F	G	H
016.050	500Kg	255	157	260	50 - 180	72	-	280	24
016.100	1.0t	290	178	310	58 - 180	72	-	290	24
016.200	2.0t	375	180	350	58 - 180	96	-	305	24
016.300	3.0t	465	225	451	74 - 180	131	-	320	32
016.500	5.0t	560	263	525	98 - 180	142	-	364	32

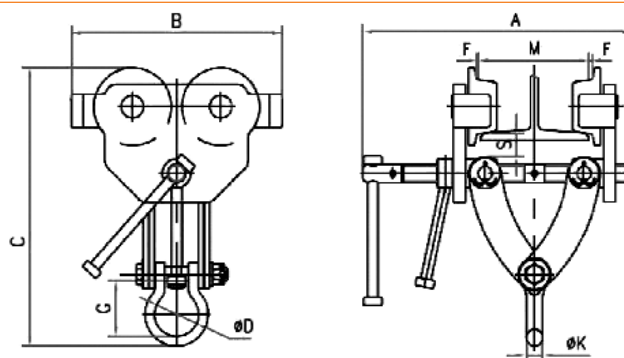
## Geared

Part Code	S.W.L.	Dimensions							
		A	B	C	D	E	F	G	H
016.050.G	500Kg	255	157	260	50 - 180	77	92	400	24
016.100.G	1.0t	290	178	310	58 - 180	77	92	410	24
016.200.G	2.0t	375	180	350	58 - 180	98	92	425	24
016.300.G	3.0t	465	225	451	74 - 180	132	108	440	32
016.500.G	5.0t	560	263	525	98 - 180	148	150	484	32



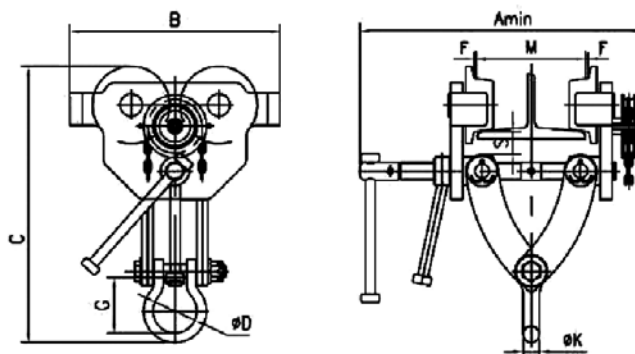
## Beam Trolleys - BSEN 13157:2004

### Plain Trolley



Part Code	014.100	014.200	014.300	014.500	014.1000		
Capacity (tonne)	1	2	3	5	10		
Test Load (kN)	10.71	29.42	44.13	61.29	122.58		
Min. Radius of curve (m)	1.0	1.1	1.3	1.4	2.0		
Dimensions	A	325	325	342	480	480	
	B	236	280	345	377	450	
	C	Min	315	372	418	458	603
		Max	360	415	460	532	655
	D	74	80	105	129	165	
	G	82	83	101	101	163	
	S	48	42	58	50	52	
	K	16	22	27	34	45	
F	1.5-3	1.5-3	1.5-3	1.5-3	2-3.5		
Beam width range (mm) M	64-203	76-203	82-203	100-305	136-305		
Net Weight (Kg)	10	19.5	32	53	100		

### Geared Trolley



Part Code	015.100	015.200	015.300	015.500	015.1000		
Capacity (tonne)	1	2	3	5	10		
Test Load (kN)	14.71	29.42	44.13	61.29	122.58		
Running Height (m)	3.0	3.0	3.0	3.0	3.0		
Effort to move load (N)	50	90	95	140	240		
Min. Radius of curve (m)	1.0	1.1	1.3	1.4	2.0		
Dimensions	A min	380	380	400	535	545	
	B	236	280	345	377	450	
	C	Min	315	372	418	458	603
		Max	362	415	460	532	655
	D	74	80	105	129	165	
	G	82	83	101	101	163	
	S	48	42	58	50	52	
	K	16	22	27	34	45	
F	1.5-3	1.5-3	1.5-3	1.5-3	2-3.5		
Beam width range (mm) M	64-203	76-203	82-203	100-305	136-305		
Net Weight (Kg)	14	24	36	58	105		



**William Hackett**

Distributed by

