

Yale®

Cable pullers

Yaletrac cable puller

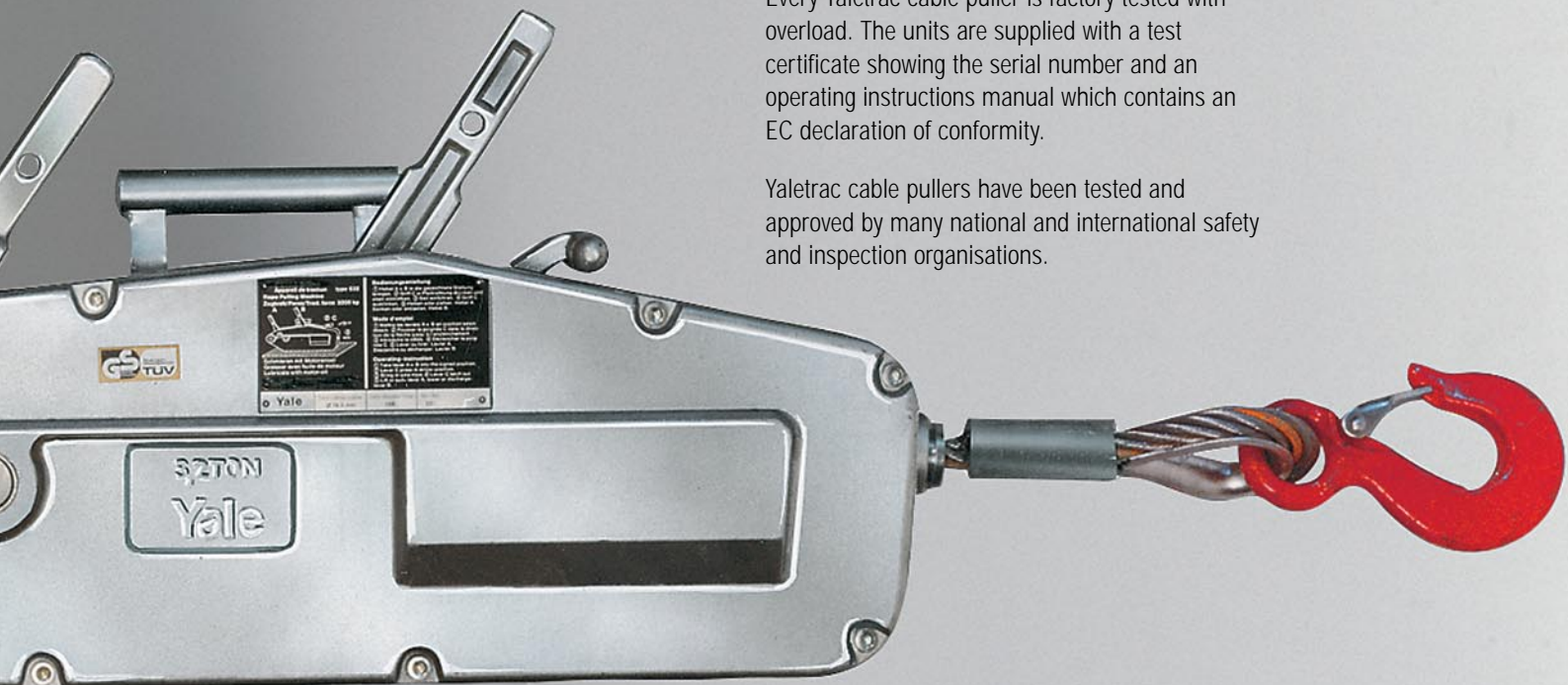
800 kg · 1.600 kg · 3.200 kg

The portable Yaletrac cable puller is a versatile tool for pulling, lifting, lowering, tensioning and securing loads over long distances. It has been specially designed for applications in industry, building construction, civil engineering, power line construction, ship building and oil refineries etc.

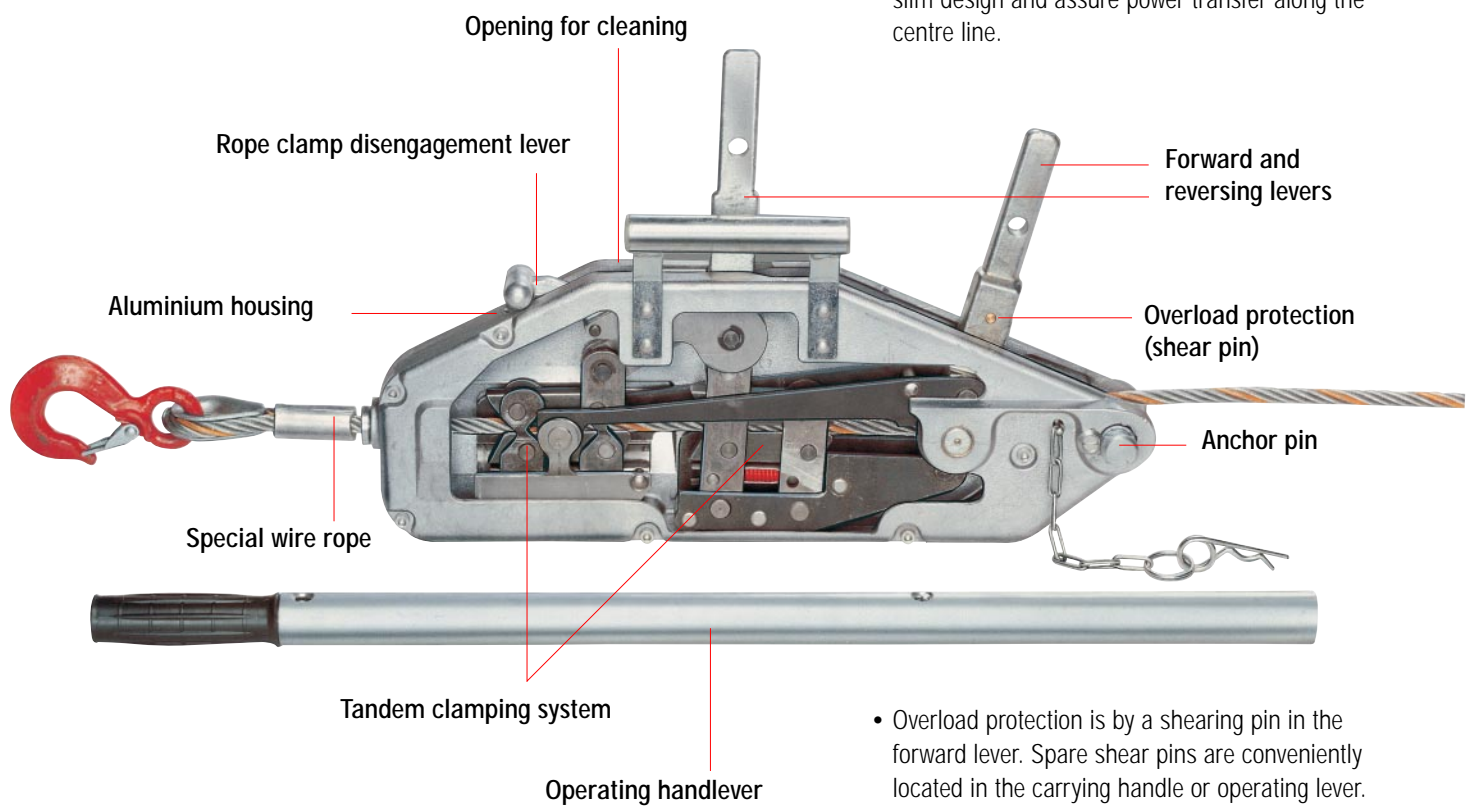
The Yaletrac cable puller is almost service free – easy to use and safe. The standard unit comprises of the Yaletrac cable puller with handlever and a 20 m resp. 10 m length of wire rope mounted on a hand reel. The original Yaletrac wire rope has six strands with a steel core and is identified by an orange strand. Only this special wire rope will ensure proper functioning.

Every Yaletrac cable puller is factory tested with overload. The units are supplied with a test certificate showing the serial number and an operating instructions manual which contains an EC declaration of conformity.

Yaletrac cable pullers have been tested and approved by many national and international safety and inspection organisations.



Cable puller Yaletrac



Features

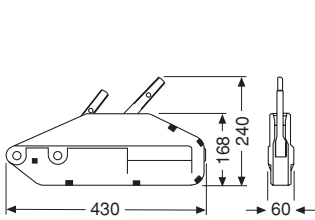
- Light weight, compact, high strength aluminium housing. Smooth contour design with large, flat bottom surface for increased stability in horizontal and vertical working position.
- Forward and reversing levers in tandem provide slim design and assure power transfer along the centre line.

As shown in the drawings all models can be fitted with safety clevis hooks.

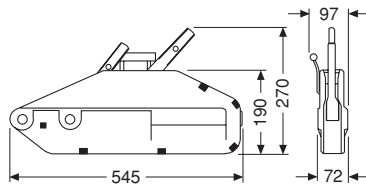
- Overload protection is by a shearing pin in the forward lever. Spare shear pins are conveniently located in the carrying handle or operating lever. A broken pin can be replaced without removing the load.
- A lever disengages the rope clamp system allowing easy, smooth installation of the wire rope.
- Yaletrac uses a special flexible wire rope. It has six strands with a steel core and is identified by an orange strand. The rope is tapered at one end for easy threading and fitted with a safety hook on the other end.
- The parallel arrangement of the clamping system protects the wire rope by distributing the clamping forces evenly. A long rope advance per each lever stroke increases the working speed.
- The large opening in the top of the unit allows easy cleaning: simply flush the unit with water, apply motor oil for lubrication and the Yaletrac is again ready for use.



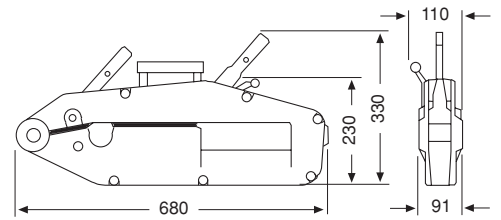
Model	Capacity (WLL) kg	Rope advance per double stroke mm	Lever pull at WLL daN	Lever length mm	Wire rope Ø mm	Weight without rope kg	Rope weight kg/m
Yaletrac Y 08	800	60	24	800	8,4	7,0	0,29
Yaletrac Y 16	1600	60	30	790/1190	11,5	14,0	0,53
Yaletrac Y 32	3200	40	50	790/1190	16,0	21,0	1,0



Yaletrac Y08



Yaletrac Y16



Yaletrac Y32

Also accepted for passenger elevation purposes!

Yaletrac accessories

Sling rope DIN 3088

for model		Y 08	Y 16	Y 32
Wire rope Ø	mm	10	14	18
Length	m	1,0	1,5	2,0
Length	m	2,0	2,5	3,0

Hand reel

for model		Y 08	Y 16	Y 32
For max. rope length	m	50	30	20

Drum reel

for model		Y 08	Y 16	Y 32
For max. rope length	m	100	80	60

Yaletrac storage box

Steel plate 74 x 26 x 45 cm



Clevis hook with safety latch



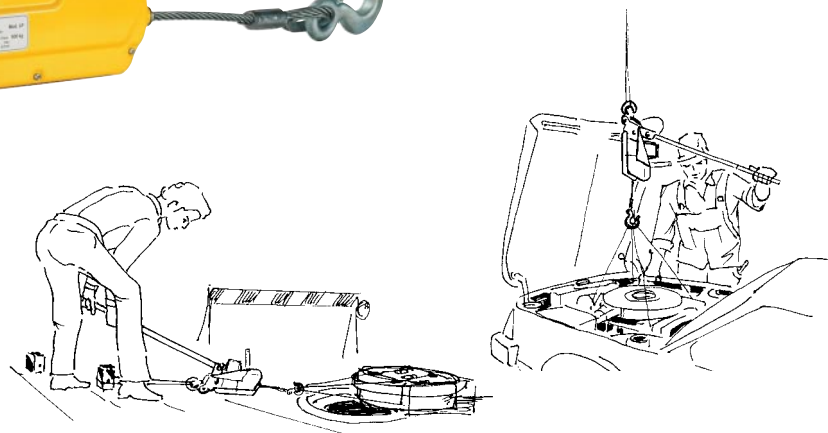
Cable puller LP



Yale cable puller LP

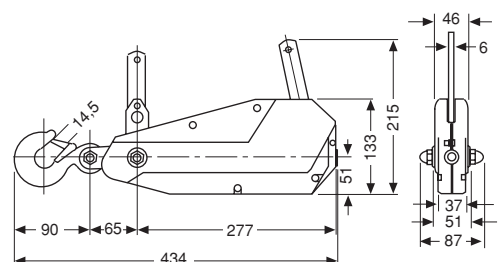
Capacity 500 kg

A practical aid for pulling, lifting, tensioning, lowering in many applications in- and outdoors. A compact, handy tool - ideal for service and assembly, for workshops and recreation. The stamped steel housing is lightweight and efficient. The complete set comprises of cable puller with anchor bolt and clevis hook, telescope operating lever, 10 metres of wire rope, carrying handle and a 1 metre length anchor webbing sling.



Capacity (WLL) kg	Rope advance per double stroke mm	Lever pull at WLL daN	Lever length mm	Wire rope Ø mm	Weight without rope and lever kg	Rope weight kg/m
500	35	15	600	8,3	4,0	0,29

Yale hoists and trolleys are not designed for passenger elevation applications and must not be used for this purpose!



Yale cable puller LM

Pulling force 500 - 1.800 daN

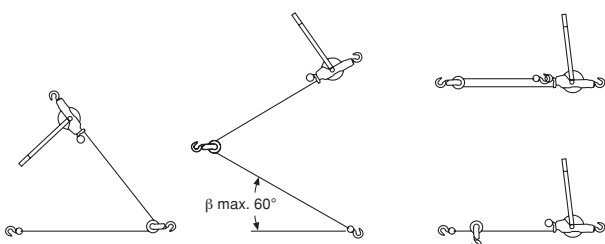
The use of aluminium alloy castings provide a lightweight, corrosion resistant pulling and tensioning unit. The double interlocking pawl system ensures safe function, all load bearing shafts are mounted on prelubricated bearings to reduce wear. All springs and shafts are manufactured from stainless steel. The lifting medium is a non-twisting, zinc plated, special steel cable. The cable pullers are fitted with fracture resistant suspension and load hooks. The hooks are fitted with safety latches and are free to rotate through 360°.

The cable puller LM can be used in single or double fall configuration. In double fall configuration the pulling force is doubled and the lifting height is halved.



Model	Single fall			Double fall			Net weight kg	Lever length mm	Hook opening mm	Rope Ø mm
	Pulling force daN	Hook path m	Headroom mm	Pulling force daN	Hook path m	Headroom mm				
115 D VB	500	4,6	550	1000	2,3	700	4,5	420	22	4,8
202 WN VB	500	6,0	525	1000	3,0	690	5,2	520	22	4,8
434 WN VB	500	9,0	550	1000	4,5	710	5,8	530	22	4,8
S 434 WN VB	700	6,0	565	1400	3,0	725	6,0	530	22	5,6
S 404 WN VB	900	5,2	575	1800	2,6	720	5,9	635	22	6,4

Rigging configurations



Attention!
Reduced capacity

The units may only be used for pulling and tensioning. Lifting and lowering of loads is not permitted.



Little Mule® cable grip LMG

Pulling force 2.000 - 5.000 daN

The LITTLE MULE® cable grip is a device for gripping, pulling and tensioning unsheathed wire ropes, cables and metal rods in all forms up to a tensile strength of 1770 N/mm² but is dependant on the diameter and surface integrity.

The parallel jaws provide a firm, non-slip grip without causing damage to the wire rope.

A special spring-loaded guide prevents the grip from dropping off the wire rope and allows instant release without jamming.

The model LMG II-X is supplied with grooved jaws and is suitable for wire ropes with a tensile strength of up to 1960 N/mm², but is dependant on the rope diameter and surface integrity.

Technical Data

Model		LMG I	LMG II	LMG II-X	LMG III
Pulling force	daN	2000	3000	3000	5000
For cable Ø	mm	5-15	8-20	8-20	18-32
Eye opening	mm	31 x 44	31 x 44	31 x 44	66 x 93
Weight	kg	1,6	2,9	2,9	9,5

Pulley blocks, hinged, with single steel sheave

Capacities 1.000 - 6.400 kg

One side of the Yale pulley blocks is hinged and can be opened for easy and quick positioning of the wire rope on the sheave.

It can also provide a quick and versatile rigging point or redirect a wire rope.

Swinging the hook in the direction of pull securely locks the pulley block. The high quality cast steel sheaves have machined grooves and are fitted with Permaglide® bushes.

When choosing and classifying pulley blocks, take the „Principles for Rope Drives“ DIN 15020 into consideration



Dimensions in mm

Capacity kg	B mm	B ₁ mm	B ₂ mm	C mm	ø D ₁ mm	ø D ₂ mm	L mm	L ₁ mm	L ₂ mm	R mm	Rope ø mm	Weight kg
1000	118	76	17	23	85	105	305	200	23	4	7	3,3
2000	199	92	24	27	150	190	425	263	30	7	13	8,9
3200	230	108	28	31	180	220	496	295	40	9	15	15,5
6400	270	116	35	42	210	260	655	375	47	10	18	26,5



Optional

Can be supplied with a clevis fitting.

